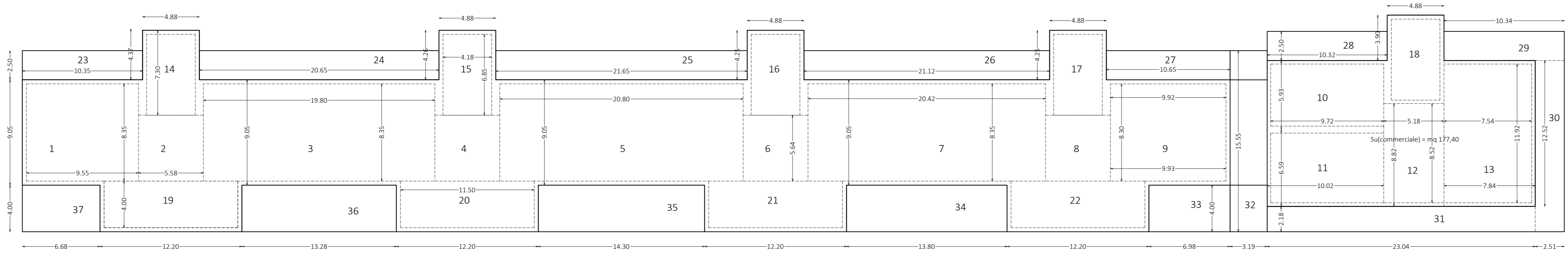
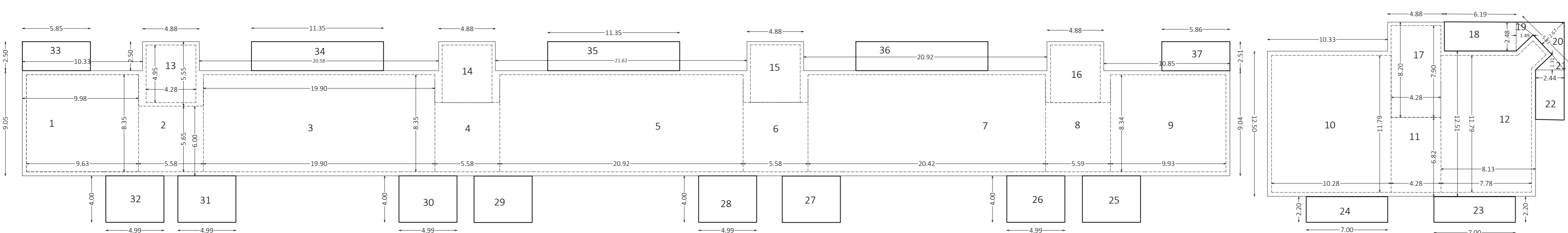


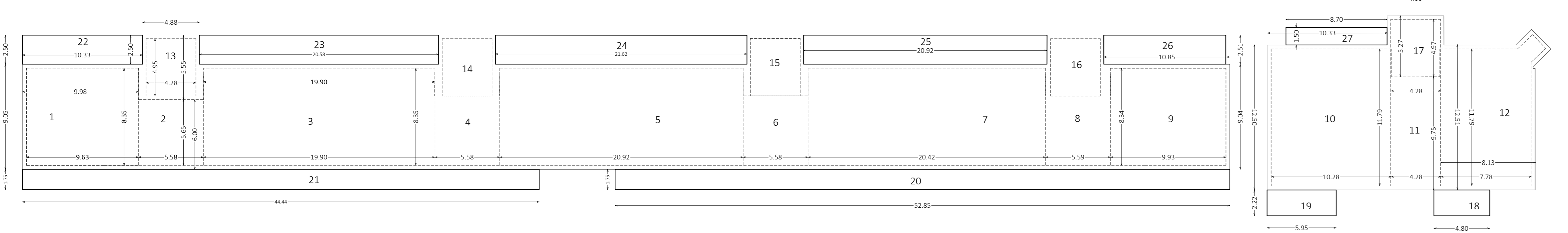
PIANTA PIANO INTERRATO



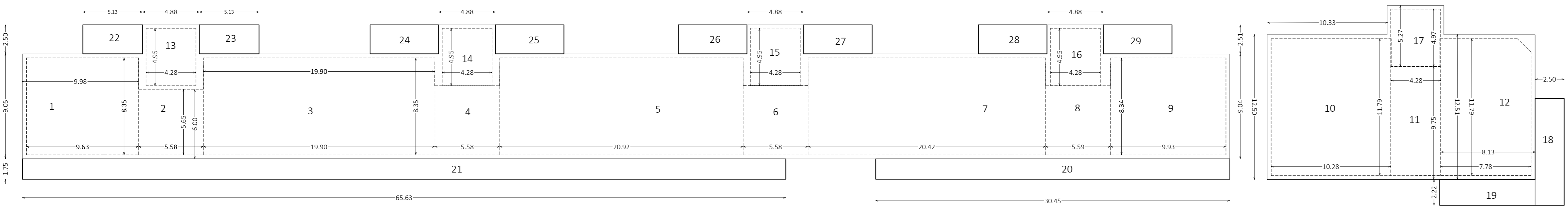
PIANTA PIANO TERRA



PIANTA PIANO PRIMO



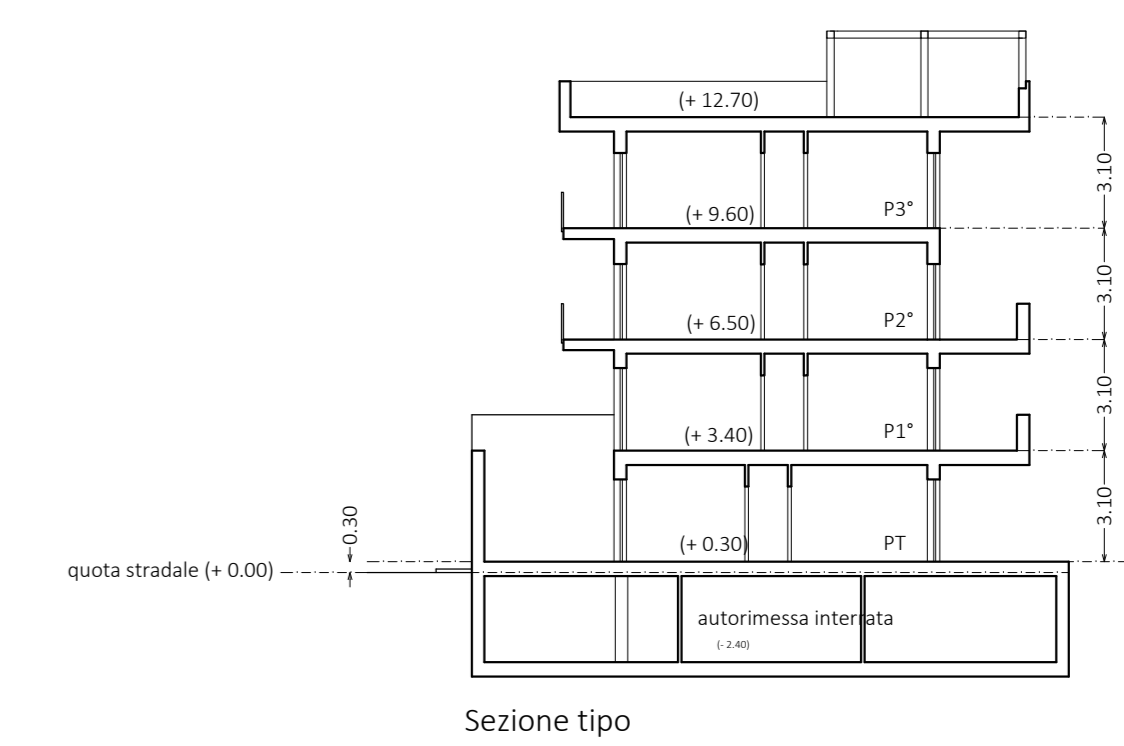
PIANTA PIANO SECONDO



PIANTA PIANO TERZO

| SUL P. interrato |       |       | Snr P. interrato |        |       |       |      |
|------------------|-------|-------|------------------|--------|-------|-------|------|
| mq               | mq    | mq    | mq               | mq     | mq    |       |      |
| 1                | 16.65 | 10.68 | 178              | 1      | 15.45 | 9.85  | 137  |
| 2                | 15.78 | 4.98  | 79               | 2      | 14.58 | 4.98  | 75   |
| 3                | 16.65 | 20.72 | 345              | 3      | 15.45 | 20.72 | 319  |
| 4                | 15.78 | 4.98  | 79               | 4      | 14.58 | 4.98  | 75   |
| 5                | 16.65 | 21.51 | 362              | 5      | 15.45 | 21.51 | 336  |
| 6                | 15.78 | 4.98  | 79               | 6      | 14.58 | 4.98  | 75   |
| 7                | 16.65 | 21.02 | 350              | 7      | 15.45 | 21.02 | 324  |
| 8                | 15.78 | 4.98  | 79               | 8      | 14.58 | 4.98  | 75   |
| 9                | 16.65 | 15.49 | 258              | 9      | 15.45 | 15.49 | 246  |
| 10               | 21.25 | 20.52 | 437              | 10     | 21.05 | 19.70 | 415  |
| TOTALE           |       |       | 2244             | TOTALE |       |       | 2144 |

vol. fuori terra = 2.234 \* 0,30 = 670



Sezione tipo

| SUL P.terra |       |       | SUL P.terra |        |       | Snr P.terra |         |        |      |      |         |
|-------------|-------|-------|-------------|--------|-------|-------------|---------|--------|------|------|---------|
| mq          | mq    | mq    | mq          | mq     | mq    | mq          | mq      | mq     |      |      |         |
| 1           | 9.95  | 10.31 | 93.67       | 1      | 5.55  | 8.30        | 29.27   | 14     | 6.85 | 4.00 | 27.40   |
| 2           | 5.58  | 5.58  | 31.33       | 2      | 5.58  | 5.58        | 31.33   | 15     | 6.85 | 4.00 | 27.40   |
| 3           | 9.95  | 20.83 | 186.88      | 3      | 19.4  | 8.30        | 164.24  | 16     | 6.85 | 4.00 | 27.40   |
| 4           | 5.58  | 5.58  | 31.33       | 4      | 5.58  | 5.58        | 31.33   | 17     | 6.85 | 4.00 | 27.40   |
| 5           | 9.95  | 21.85 | 193.93      | 5      | 20.4  | 8.30        | 172.64  | 18     | 6.85 | 4.00 | 27.40   |
| 6           | 5.58  | 5.58  | 31.33       | 6      | 5.58  | 5.58        | 31.33   | 19     | 6.85 | 4.00 | 27.40   |
| 7           | 9.95  | 21.15 | 193.61      | 7      | 8.3   | 20.50       | 168.68  | 20     | 6.85 | 4.00 | 27.40   |
| 8           | 5.58  | 5.58  | 31.33       | 8      | 5.58  | 5.58        | 31.33   | 21     | 6.85 | 4.00 | 27.40   |
| 9           | 10.65 | 9.05  | 96.18       | 9      | 8.3   | 19.02       | 82.84   | 22     | 6.85 | 4.00 | 27.40   |
| 10          | 10.32 | 5.93  | 61.20       | 10     | 9.70  | 5.93        | 57.52   | 23     | 6.85 | 4.00 | 27.40   |
| 11          | 5.58  | 10.02 | 56.08       | 11     | 5.72  | 5.93        | 34.13   | 24     | 6.85 | 4.00 | 27.40   |
| 12          | 8.82  | 5.18  | 45.69       | 12     | 8.50  | 5.18        | 43.69   | 25     | 6.85 | 4.00 | 27.40   |
| 13          | 12.52 | 7.81  | 98.18       | 13     | 13.42 | 7.81        | 104.88  | 26     | 6.85 | 4.00 | 27.40   |
| 14          | 4.88  | 6.90  | 33.67       | 14     | 4.88  | 6.90        | 33.67   | 27     | 6.85 | 4.00 | 27.40   |
| 15          | 4.88  | 6.90  | 33.67       | 15     | 4.88  | 6.90        | 33.67   | 28     | 6.85 | 4.00 | 27.40   |
| 16          | 4.88  | 6.90  | 33.67       | 16     | 4.88  | 6.90        | 33.67   | 29     | 6.85 | 4.00 | 27.40   |
| 17          | 4.88  | 6.90  | 33.67       | 17     | 4.88  | 6.90        | 33.67   | 30     | 6.85 | 4.00 | 27.40   |
| 18          | 4.88  | 6.90  | 33.67       | 18     | 4.88  | 6.90        | 33.67   | 31     | 6.85 | 4.00 | 27.40   |
| 19          | 4.88  | 6.90  | 33.67       | 19     | 4.88  | 6.90        | 33.67   | 32     | 6.85 | 4.00 | 27.40   |
| 20          | 4.88  | 6.90  | 33.67       | 20     | 4.88  | 6.90        | 33.67   | 33     | 6.85 | 4.00 | 27.40   |
| 21          | 4.88  | 6.90  | 33.67       | 21     | 4.88  | 6.90        | 33.67   | 34     | 6.85 | 4.00 | 27.40   |
| 22          | 4.88  | 6.90  | 33.67       | 22     | 4.88  | 6.90        | 33.67   | 35     | 6.85 | 4.00 | 27.40   |
| 23          | 4.88  | 6.90  | 33.67       | 23     | 4.88  | 6.90        | 33.67   | 36     | 6.85 | 4.00 | 27.40   |
| 24          | 4.88  | 6.90  | 33.67       | 24     | 4.88  | 6.90        | 33.67   | 37     | 6.85 | 4.00 | 27.40   |
| 25          | 4.88  | 6.90  | 33.67       | 25     | 4.88  | 6.90        | 33.67   | 38     | 6.85 | 4.00 | 27.40   |
| 26          | 4.88  | 6.90  | 33.67       | 26     | 4.88  | 6.90        | 33.67   | 39     | 6.85 | 4.00 | 27.40   |
| 27          | 4.88  | 6.90  | 33.67       | 27     | 4.88  | 6.90        | 33.67   | 40     | 6.85 | 4.00 | 27.40   |
| 28          | 4.88  | 6.90  | 33.67       | 28     | 4.88  | 6.90        | 33.67   | 41     | 6.85 | 4.00 | 27.40   |
| 29          | 4.88  | 6.90  | 33.67       | 29     | 4.88  | 6.90        | 33.67   | 42     | 6.85 | 4.00 | 27.40   |
| 30          | 4.88  | 6.90  | 33.67       | 30     | 4.88  | 6.90        | 33.67   | 43     | 6.85 | 4.00 | 27.40   |
| 31          | 4.88  | 6.90  | 33.67       | 31     | 4.88  | 6.90        | 33.67   | 44     | 6.85 | 4.00 | 27.40   |
| 32          | 4.88  | 6.90  | 33.67       | 32     | 4.88  | 6.90        | 33.67   | 45     | 6.85 | 4.00 | 27.40   |
| 33          | 4.88  | 6.90  | 33.67       | 33     | 4.88  | 6.90        | 33.67   | 46     | 6.85 | 4.00 | 27.40   |
| 34          | 4.88  | 6.90  | 33.67       | 34     | 4.88  | 6.90        | 33.67   | 47     | 6.85 | 4.00 | 27.40   |
| 35          | 4.88  | 6.90  | 33.67       | 35     | 4.88  | 6.90        | 33.67   | 48     | 6.85 | 4.00 | 27.40   |
| 36          | 4.88  | 6.90  | 33.67       | 36     | 4.88  | 6.90        | 33.67   | 49     | 6.85 | 4.00 | 27.40   |
| 37          | 4.88  | 6.90  | 33.67       | 37     | 4.88  | 6.90        | 33.67   | 50     | 6.85 | 4.00 | 27.40   |
| TOTALE      |       |       | 1524.50     | TOTALE |       |             | 1524.50 | TOTALE |      |      | 1524.50 |

vol. piano terra = 1.525 \* 3,10 = 4.726

| SUL P. primo |       |       | SUL P. primo |        |       | Snr P. primo |        |        |      |      |       |
|--------------|-------|-------|--------------|--------|-------|--------------|--------|--------|------|------|-------|
| mq           | mq    | mq    | mq           | mq     | mq    | mq           | mq     | mq     |      |      |       |
| 1            | 9.95  | 5.58  | 55.32        | 1      | 5.58  | 8.35         | 35.33  | 13     | 4.28 | 4.95 | 21.18 |
| 2            | 5.58  | 6.00  | 33.48        | 2      | 5.58  | 5.58         | 31.33  | 14     | 4.28 | 4.95 | 21.18 |
| 3            | 20.58 | 9.05  | 186.25       | 3      | 19.3  | 8.35         | 161.17 | 15     | 4.28 | 4.95 | 21.18 |
| 4            | 5.58  | 6.00  | 33.48        | 4      | 5.58  | 5.58         | 31.33  | 16     | 4.28 | 4.95 | 21.18 |
| 5            | 21.62 | 9.05  | 195.65       | 5      | 21.62 | 8.35         | 180.53 | 17     | 4.28 | 4.95 | 21.18 |
| 6            | 5.58  | 6.00  | 33.48        | 6      | 5.58  | 5.58         | 31.33  | 18     | 4.28 | 4.95 | 21.18 |
| 7            | 20.92 | 9.05  | 189.31       | 7      | 20.92 | 8.35         | 174.68 | 19     | 4.28 | 4.95 | 21.18 |
| 8            | 5.58  | 6.00  | 33.48        | 8      | 5.58  | 5.58         | 31.33  | 20     | 4.28 | 4.95 | 21.18 |
| 9            | 9.95  | 9.05  | 90.47        | 9      | 9.95  | 8.35         | 82.82  | 21     | 4.28 | 4.95 | 21.18 |
| 10           | 12.90 | 10.31 | 133.13       | 10     | 10.38 | 11.78        | 121.20 | 22     | 4.28 | 4.95 | 21.18 |
| 11           | 4.28  | 6.02  | 25.69        | 11     | 4.28  | 6.02         | 25.69  | 23     | 4.28 | 4.95 | 21.18 |
| 12           | 12.51 | 7.88  | 98.18        | 12     | 11.79 | 7.78         | 91.79  | 24     | 4.28 | 4.95 | 21.18 |
| 13           | 4.88  | 5.35  | 26.08        | 13     | 4.88  | 5.35         | 26.08  | 25     | 4.28 | 4.95 | 21.18 |
| 14           | 4.88  | 5.35  | 26.08        | 14     | 4.88  | 5.35         | 26.08  | 26     | 4.28 | 4.95 | 21.18 |
| 15           | 4.88  | 5.35  | 26.08        | 15     | 4.88  | 5.35         | 26.08  | 27     | 4.28 | 4.95 | 21.18 |
| 16           | 4.88  | 5.35  | 26.08        | 16     | 4.88  | 5.35         | 26.08  | 28     | 4.28 | 4.95 | 21.18 |
| 17           | 4.88  | 5.35  | 26.08        | 17     | 4.88  | 5.35         | 26.08  | 29     | 4.28 | 4.95 | 21.18 |
| TOTALE       |       |       | 1291         | TOTALE |       |              | 1291   | TOTALE |      |      | 1291  |

vol. piano primo = 1.291 \* 3,10 = 4.002

| SUL P. secondo |       |       | SUL P. secondo |        |       | Snr P. secondo |        |        |      |      |       |
|----------------|-------|-------|----------------|--------|-------|----------------|--------|--------|------|------|-------|
| mq             | mq    | mq    | mq             | mq     | mq    | mq             | mq     | mq     |      |      |       |
| 1              | 9.95  | 5.58  | 55.32          | 1      | 5.58  | 8.35           | 35.33  | 13     | 4.28 | 4.95 | 21.18 |
| 2              | 5.58  | 6.00  | 33.48          | 2      | 5.58  | 5.58           | 31.33  | 14     | 4.28 | 4.95 | 21.18 |
| 3              | 20.58 | 9.05  | 186.25         | 3      | 19.3  | 8.35           | 161.17 | 15     | 4.28 | 4.95 | 21.18 |
| 4              | 5.58  | 6.00  | 33.48          | 4      | 5.58  | 5.58           | 31.33  | 16     | 4.28 | 4.95 | 21.18 |
| 5              | 21.62 | 9.05  | 195.65         | 5      | 21.62 | 8.35           | 180.53 | 17     | 4.28 | 4.95 | 21.18 |
| 6              | 5.58  | 6.00  | 33.48          | 6      | 5.58  | 5.58           | 31.33  | 18     | 4.28 | 4.95 | 21.18 |
| 7              | 20.92 | 9.05  | 189.31         | 7      | 20.92 | 8.35           | 174.68 | 19     | 4.28 | 4.95 | 21.18 |
| 8              | 5.58  | 6.00  | 33.48          | 8      | 5.58  | 5.58           | 31.33  | 20     | 4.28 | 4.95 | 21.18 |
| 9              | 9.95  | 9.05  | 90.47          | 9      | 9.95  | 8.35           | 82.82  | 21     | 4.28 | 4.95 | 21.18 |
| 10             | 12.90 | 10.31 | 133.13         | 10     | 10.38 | 11.78          | 121.20 | 22     | 4.28 | 4.95 | 21.18 |
| 11             | 4.28  | 6.02  | 25.69          | 11     | 4.28  | 6.02           | 25.69  | 23     | 4.28 | 4.95 | 21.18 |
| 12             | 12.51 | 7.88  | 98.18          | 12     | 11.79 | 7.78           | 91.79  | 24     | 4.28 | 4.95 | 21.18 |
| 13             | 4.88  | 5.35  | 26.08          | 13     | 4.88  | 5.35           | 26.08  | 25     | 4.28 | 4.95 | 21.18 |
| 14             | 4.88  | 5.35  | 26.08          | 14     | 4.88  | 5.35           | 26.08  | 26     | 4.28 | 4.95 | 21.18 |
| 15             | 4.88  | 5.35  | 26.08          | 15     | 4.88  | 5.35           | 26.08  | 27     | 4.28 | 4.95 | 21.18 |
| 16             | 4.88  | 5.35  | 26.08          | 16     | 4.88  | 5.35           | 26.08  | 28     | 4.28 | 4.95 | 21.18 |
| 17             | 4.88  | 5.35  | 26.08          | 17     | 4.88  | 5.35           | 26.08  | 29     | 4.28 | 4.95 | 21.18 |
| TOTALE         |       |       | 1291           | TOTALE |       |                | 1291   | TOTALE |      |      | 1291  |

vol. piano secondo = 1.291 \* 3,10 = 4.002

| SUL P. terzo |       |       | SUL P. terzo |    |       | Snr P. terzo |        |    |      |      |       |
|--------------|-------|-------|--------------|----|-------|--------------|--------|----|------|------|-------|
| mq           | mq    | mq    | mq           | mq | mq    | mq           | mq     | mq |      |      |       |
| 1            | 9.95  | 5.58  | 55.32        | 1  | 5.58  | 8.35         | 35.33  | 13 | 4.28 | 4.95 | 21.18 |
| 2            | 5.58  | 6.00  | 33.48        | 2  | 5.58  | 5.58         | 31.33  | 14 | 4.28 | 4.95 | 21.18 |
| 3            | 20.58 | 9.05  | 186.25       | 3  | 19.3  | 8.35         | 161.17 | 15 | 4.28 | 4.95 | 21.18 |
| 4            | 5.58  | 6.00  | 33.48        | 4  | 5.58  | 5.58         | 31.33  | 16 | 4.28 | 4.95 | 21.18 |
| 5            | 21.62 | 9.05  | 195.65       | 5  | 21.62 | 8.35         | 180.53 | 17 | 4.28 | 4.95 | 21.18 |
| 6            | 5.58  | 6.00  | 33.48        | 6  | 5.58  | 5.58         | 31.33  | 18 | 4.28 | 4.95 | 21.18 |
| 7            | 20.92 | 9.05  | 189.31       | 7  | 20.92 | 8.35         | 174.68 | 19 | 4.28 | 4.95 | 21.18 |
| 8            | 5.58  | 6.00  | 33.48        | 8  | 5.58  | 5.58         | 31.33  | 20 | 4.28 | 4.95 | 21.18 |
| 9            | 9.95  | 9.05  | 90.47        | 9  | 9.95  | 8.35         | 82.82  | 21 | 4.28 | 4.95 | 21.18 |
| 10           | 12.90 | 10.31 | 133.13       | 10 | 10.38 | 11.78        | 121.20 | 22 | 4.28 | 4.95 | 21.18 |
| 11           | 4.28  | 6.02  | 25.69        | 11 | 4.28  | 6.02         | 25.69  | 23 | 4.28 | 4.95 | 21.18 |
| 12           | 12.51 | 7.88  | 98.18        | 12 | 11.79 | 7.78         | 91.79  | 24 | 4.28 | 4.95 | 21.18 |
| 13           | 4.88  | 5.35  | 26.08        | 13 | 4.88  | 5.35         | 26.08  | 25 | 4.28 | 4.95 | 21.18 |
| 14           | 4.88  | 5.35  | 26.08        | 14 | 4.88  | 5.35         | 26.08  | 26 | 4.28 | 4.95 | 21.18 |
| 15           | 4.88  | 5.35  | 26.08        | 15 | 4.88  | 5.35         | 26.08  | 27 | 4.28 | 4.95 | 21.18 |
| 16           | 4.88  | 5.35  | 26.08        | 16 | 4.88  |              |        |    |      |      |       |