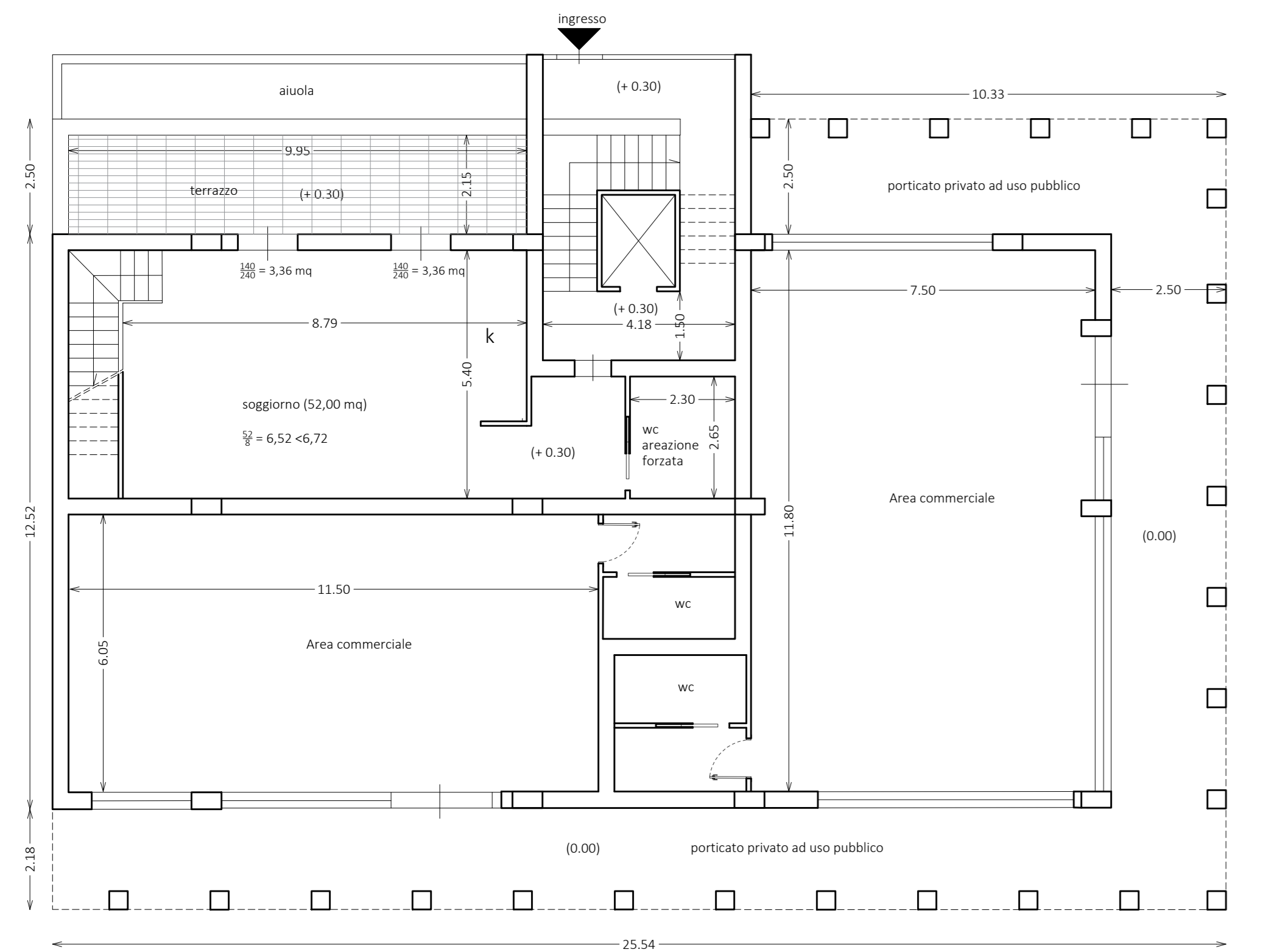
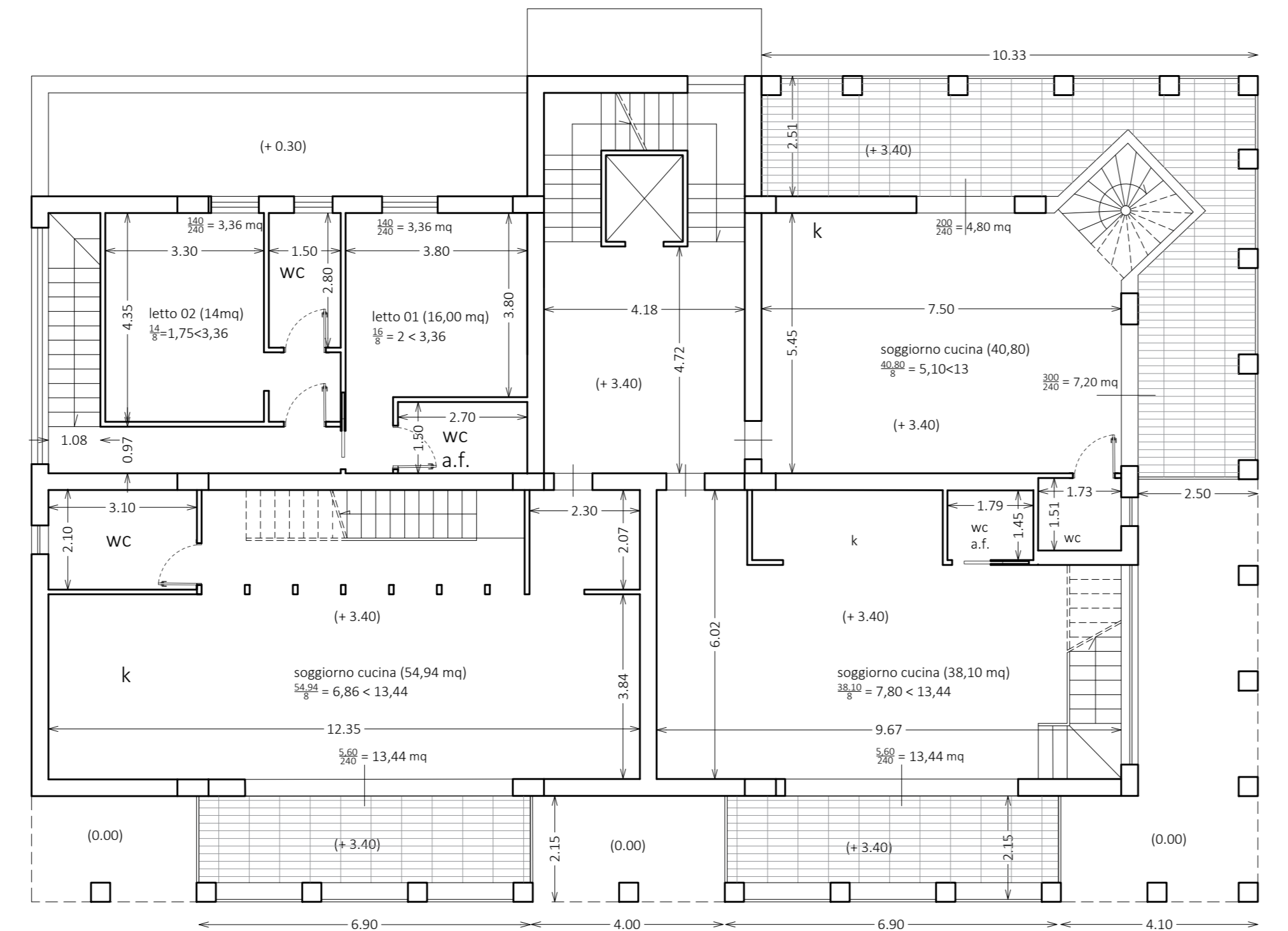


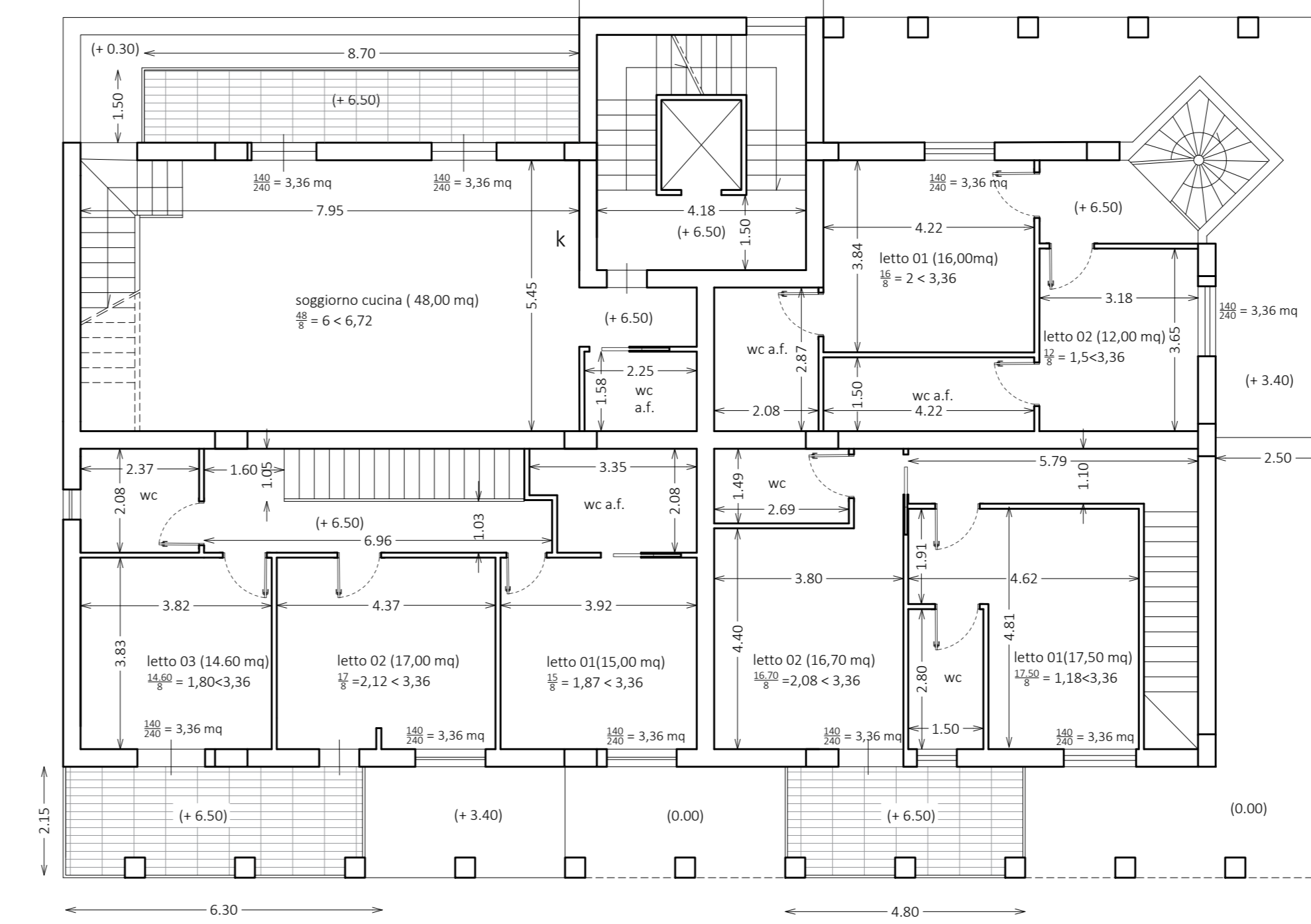
LOTTO A - SOLUZIONE DI TESTATA



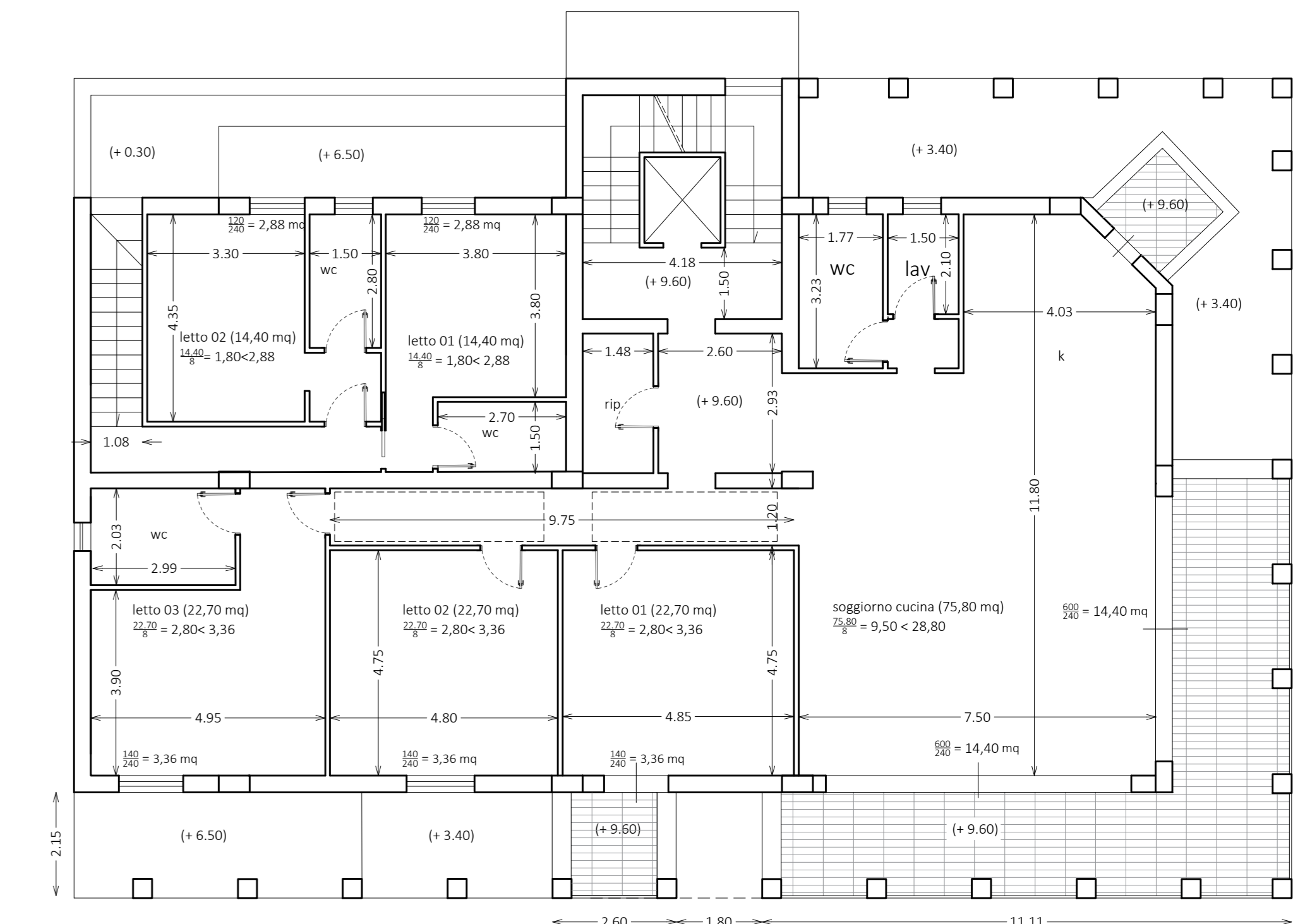
piano terra



primo piano

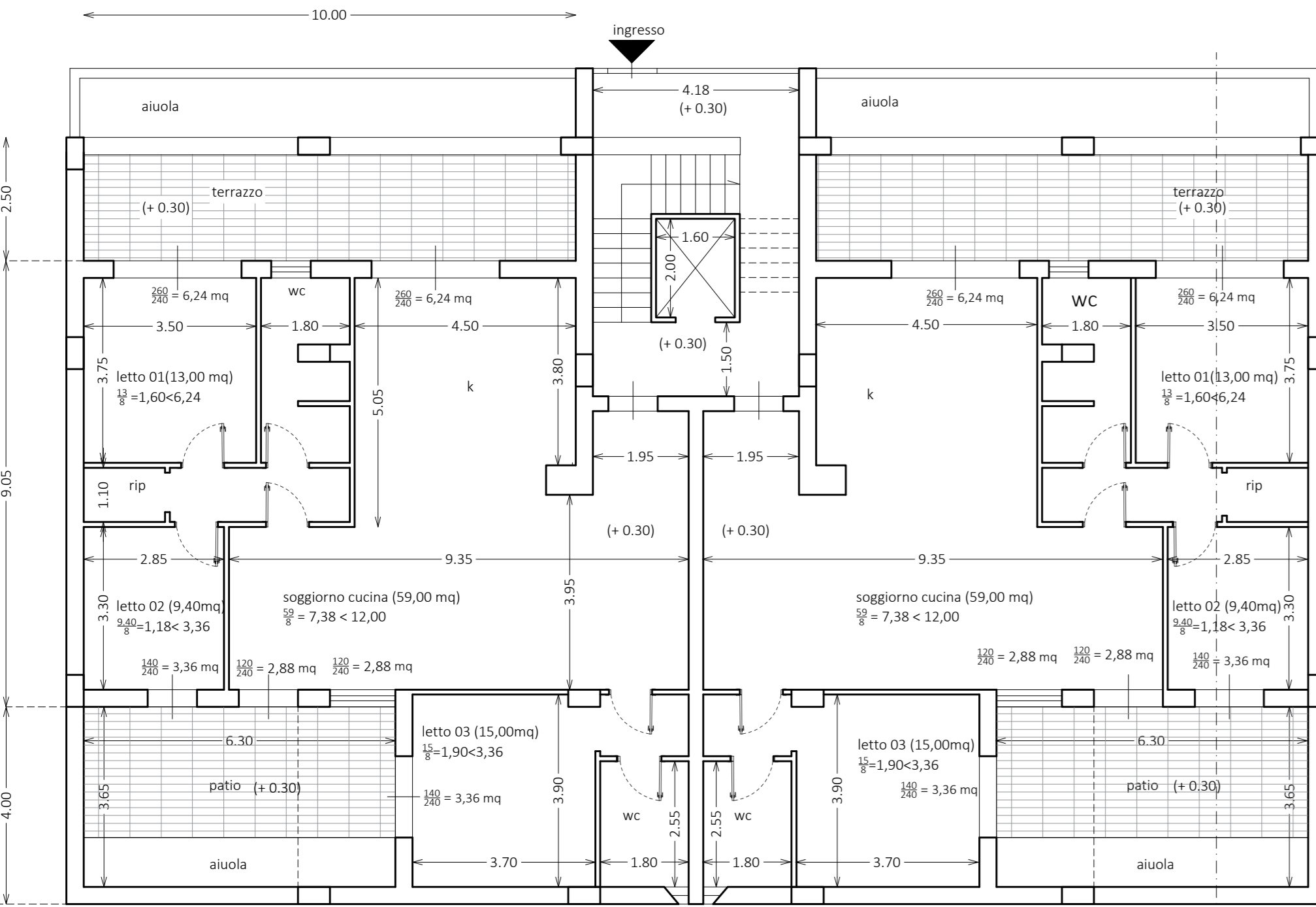


secondo piano

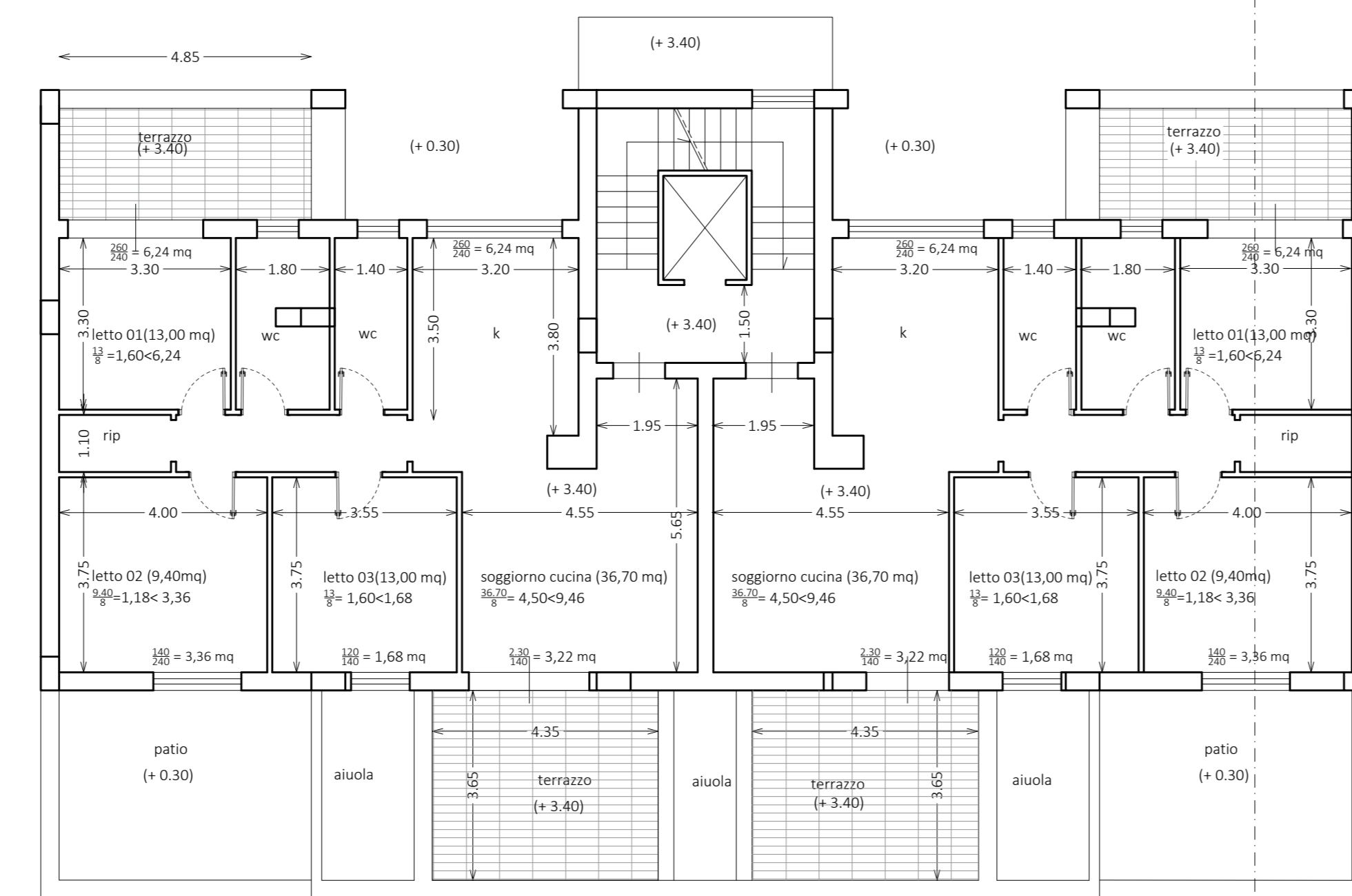


terzo piano

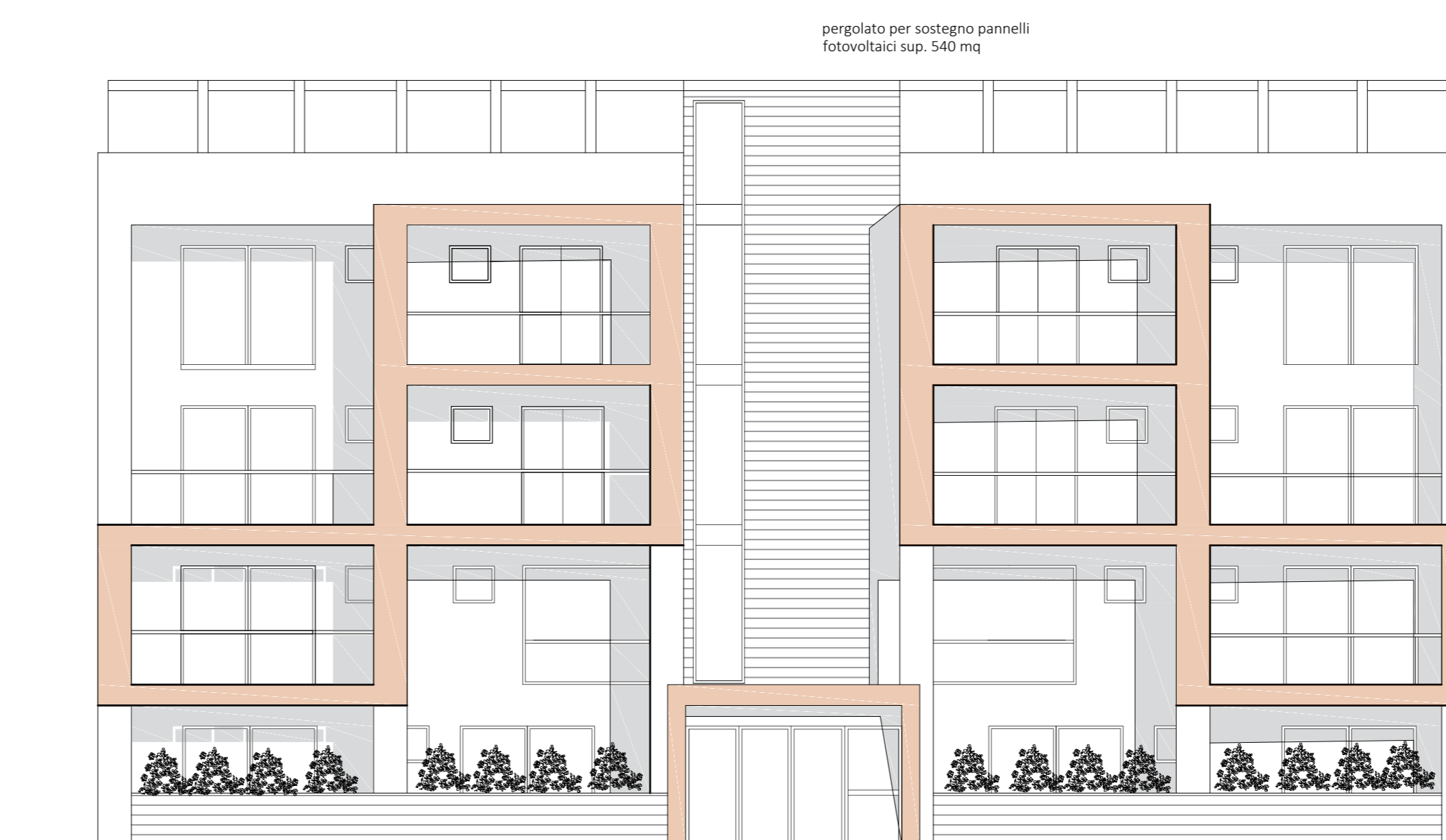
LOTTO A



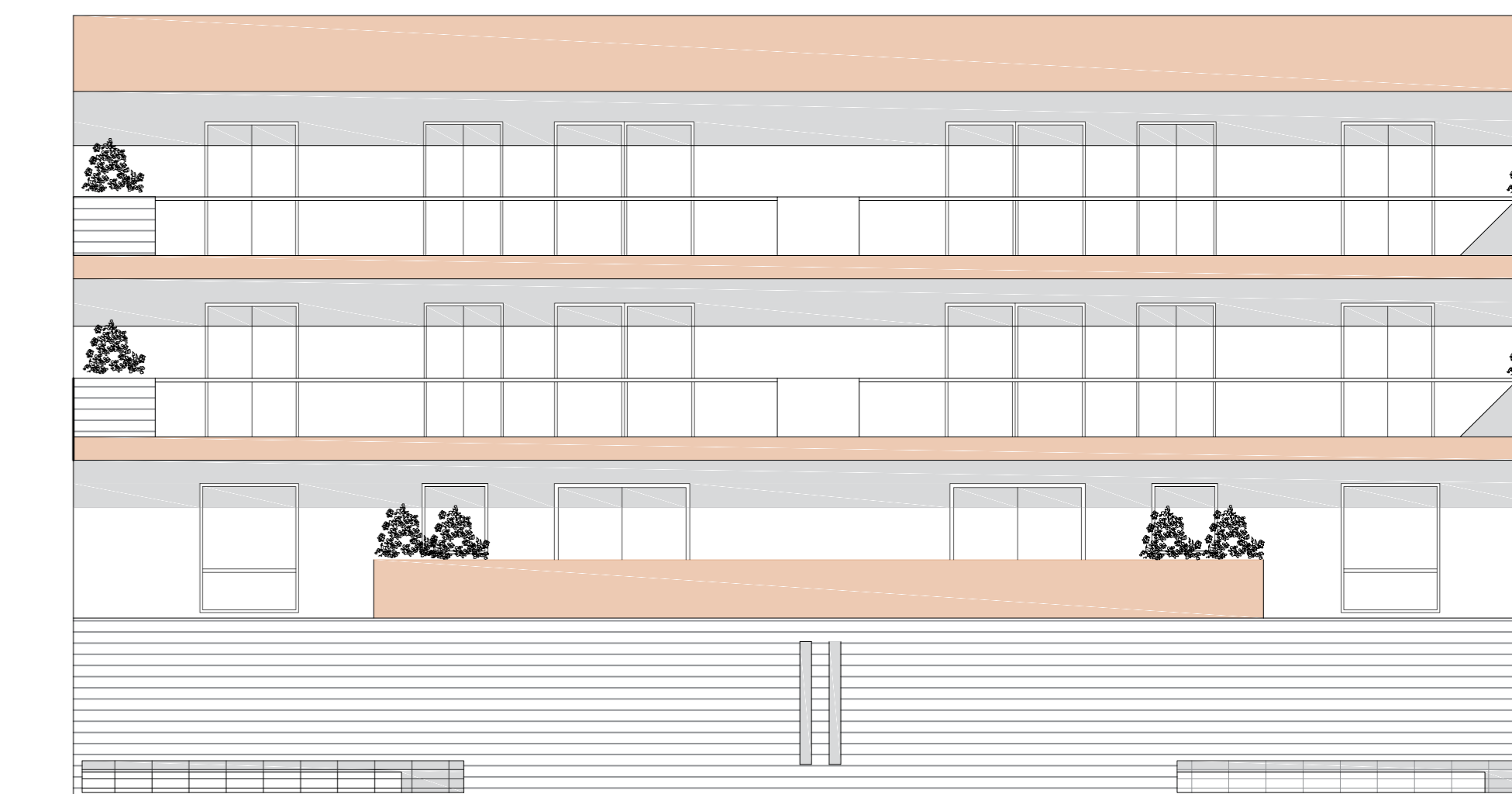
piano terra



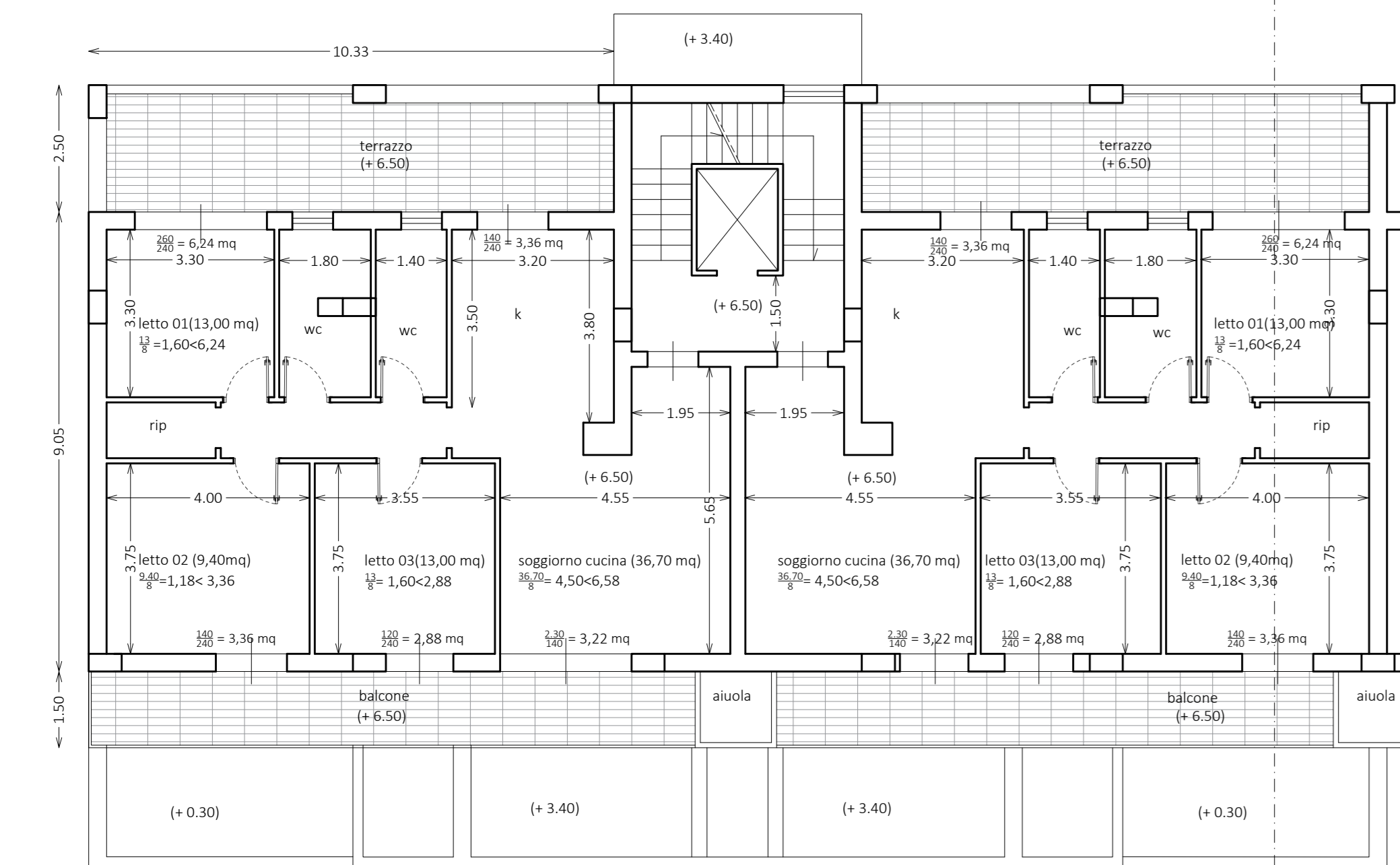
piano primo



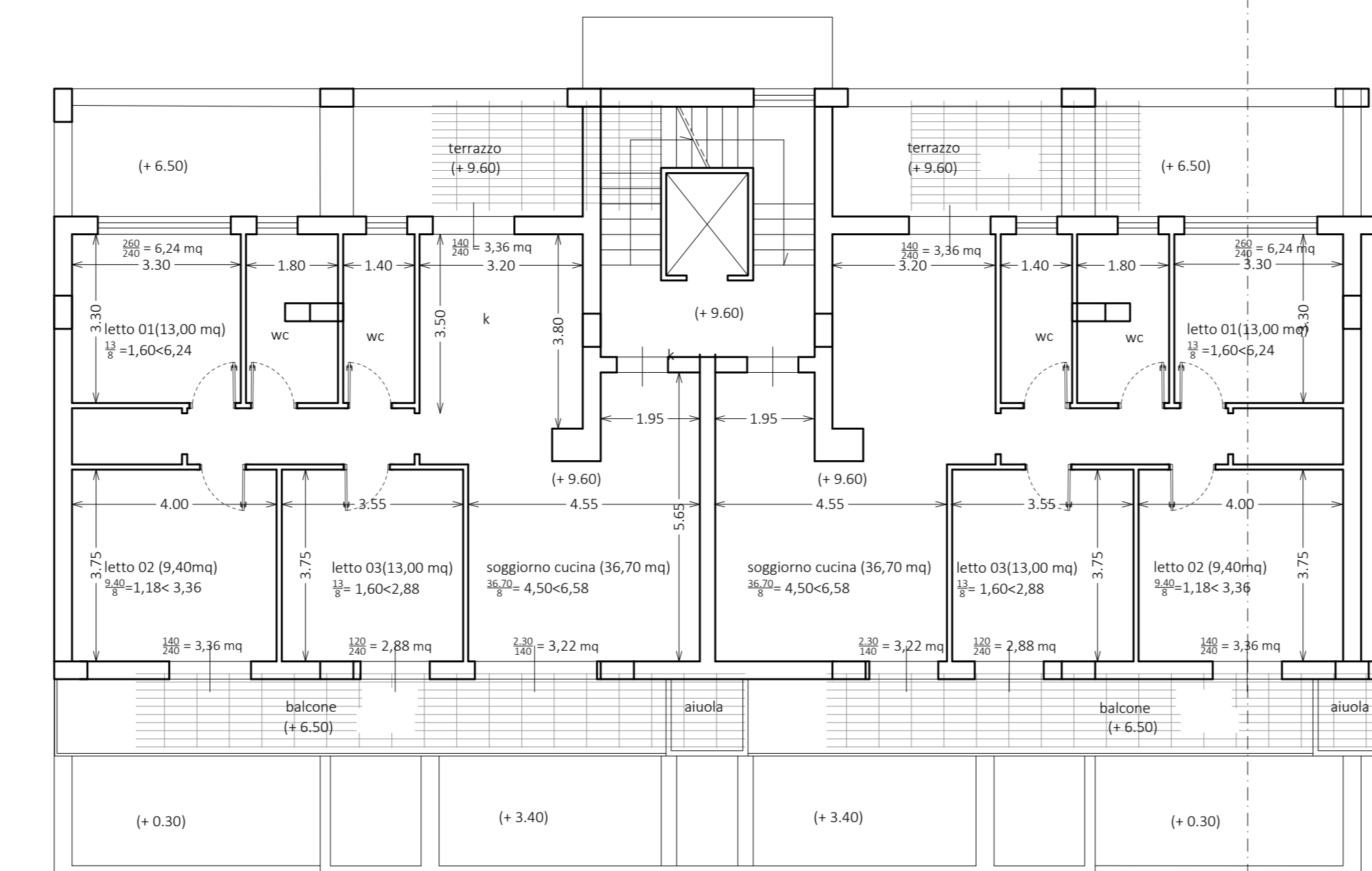
prospetto verso il cortile



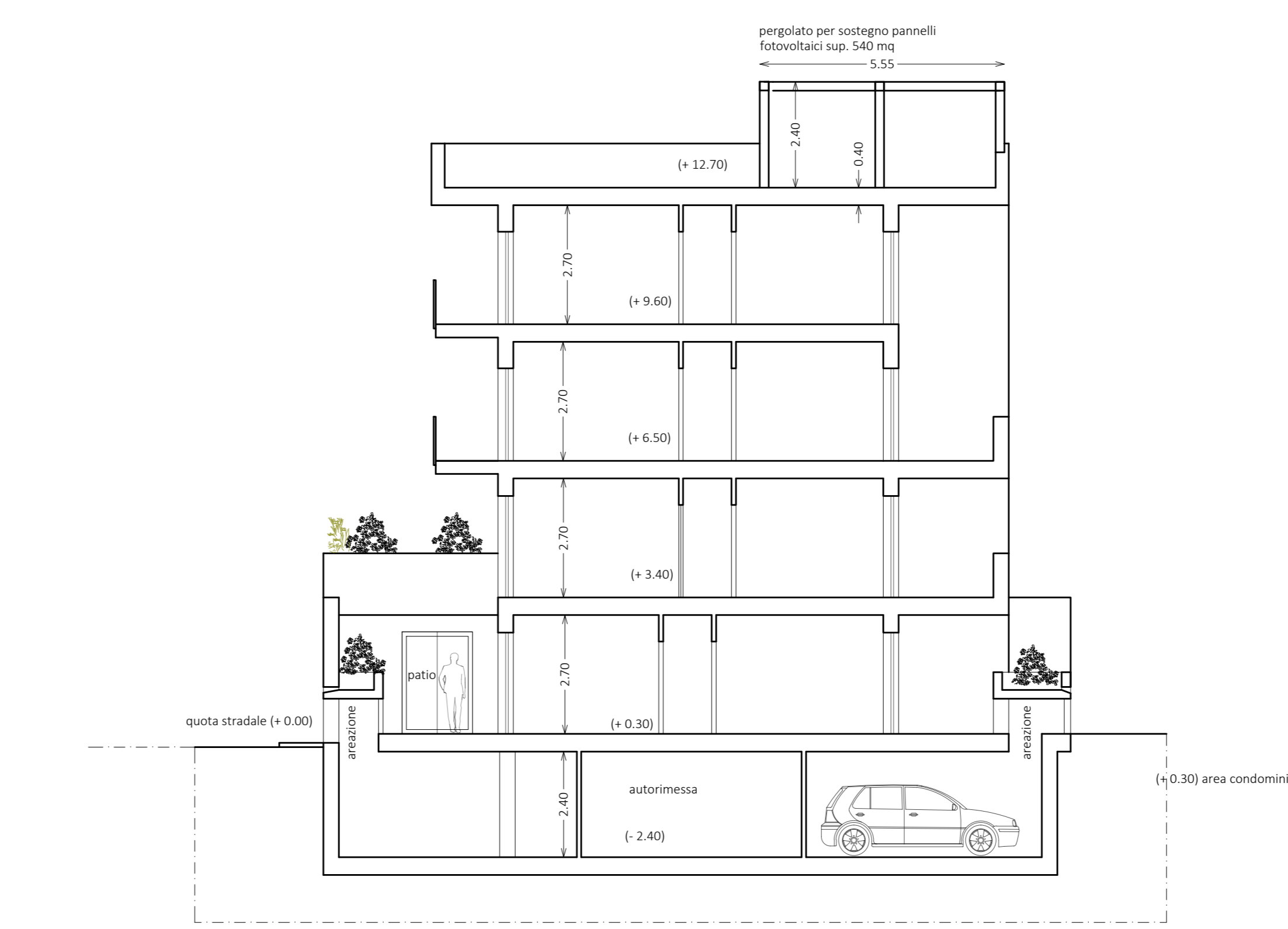
prospetto verso la strada di piano



piano secondo



piano terzo



Sezione tipo

COMUNE DI CAIVANO
Provincia di Napoli

PIANO URBANISTICO ATTUATIVO
ZONA "C.1.21.A" del P.R.G.

ELABORATO

PROGETTO ARCHITETTONICO : DETTAGLIO ALLOGGI LOTTO A
PIANTE CON CALCOLO ILLUMINAZIONE/AREAZIONE

IL PROGETTISTA:
Arch. LUIGI SIRICO

IL COMMITTENTE:
IL CLANIO SRL

TAV. 11.1 REV 01
integrazione 03.08.23

SCALA 1 : 100